

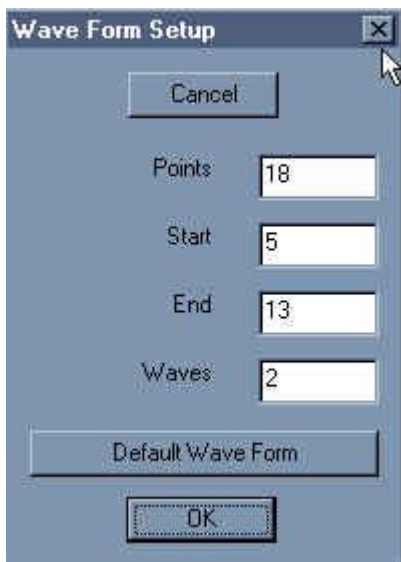
THRED GAME 4

Lesson by Vanessa Page. Copyright Augachel Pty Ltd 2002

Open Thred and select Form Wave.

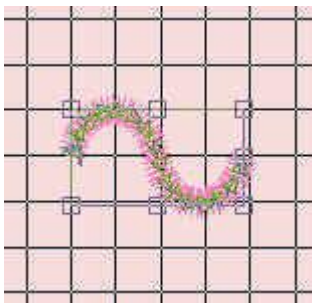
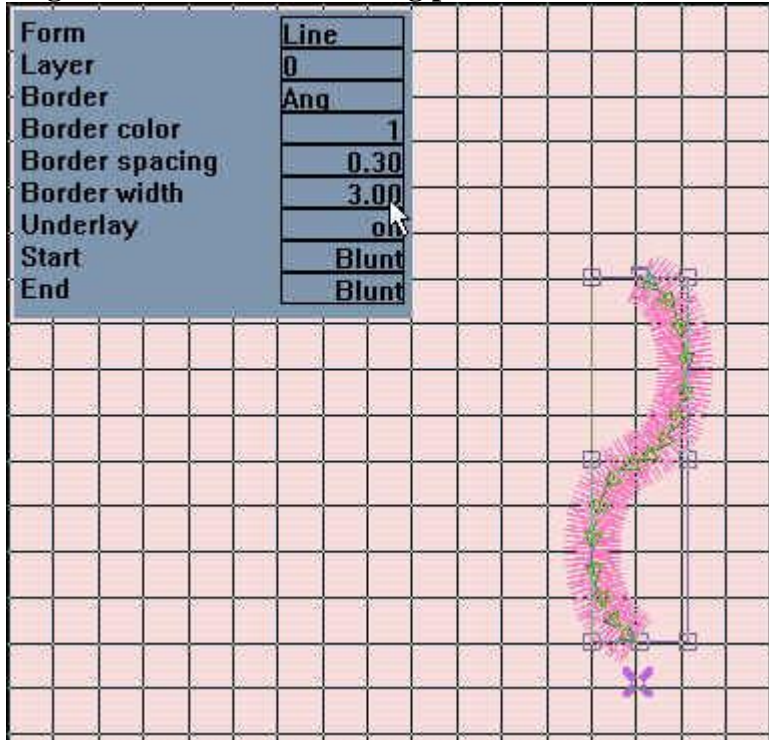


Use the following settings on the Wave menu.

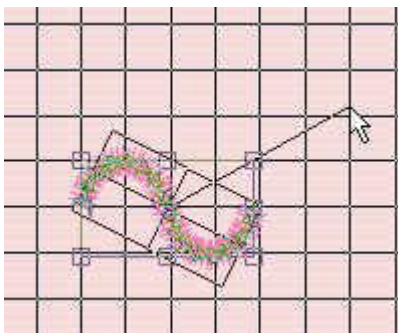


Select OK.

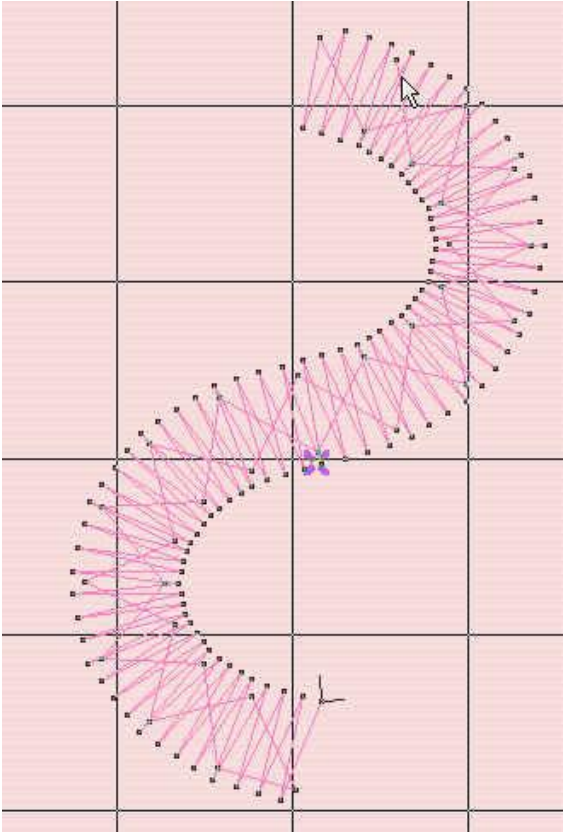
Reduce the size of the Wave design to 4 x 2 (2.5mm) Grids. Select Fill – Border – Angle Satin. Use the following preferences.



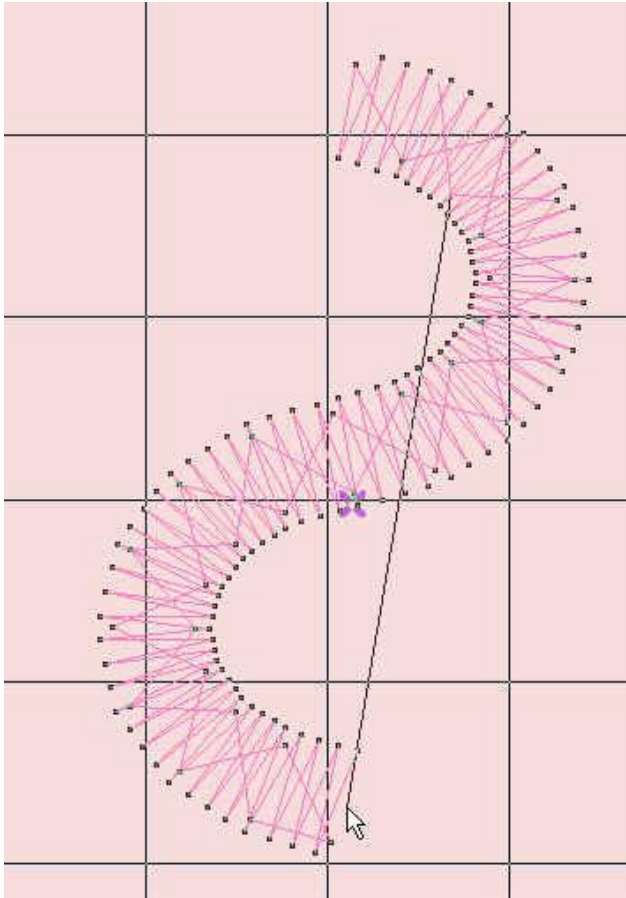
Using the Rotate Tool. Rotate the Wave design till it is N to S.



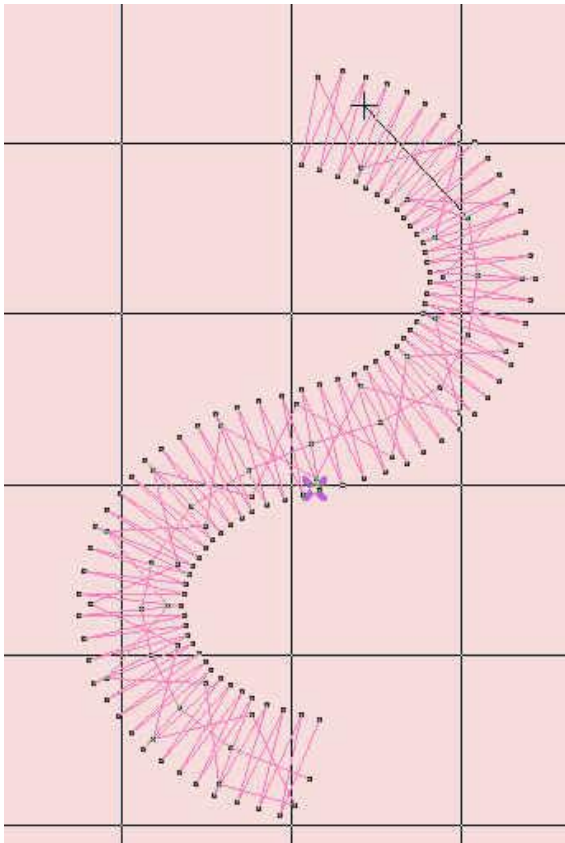
(Click outside the selected form to rotate the design)



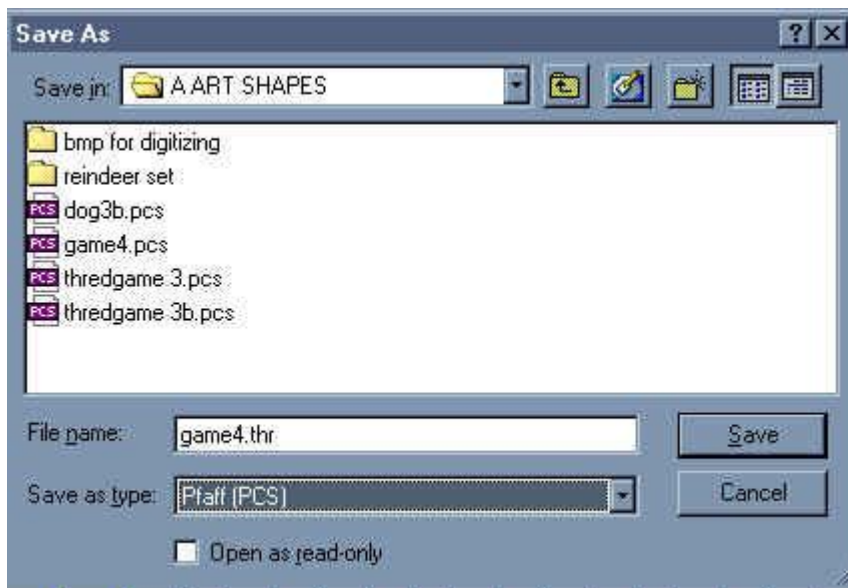
Make a Mark (M) and zoom in so that the stitch points are easy to see. Deselect the Form as well. (frm+) By hitting the End and Home buttons on your keyboard you will see the start and finish stitches.



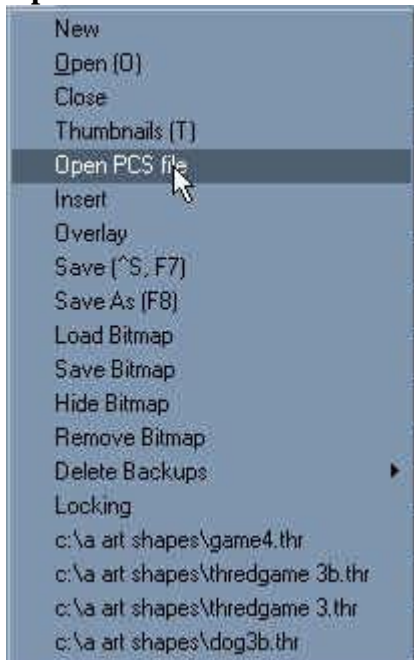
**Select the Home stitch (1st stitch) and pull it down to the bottom of the design.
Whilst it is still selected hit the space bar on the keyboard and add stitches up the
centre of the design back to near where it was originally.**



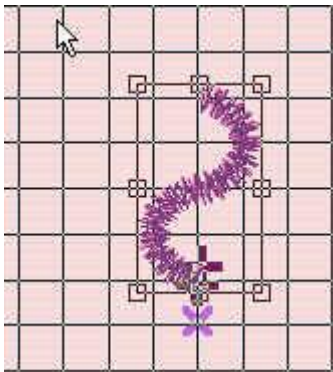
Now save the design in Pfaff format. It will also save as a thr. Format.



Open a new Thred window and open the saved Pfaff format design.

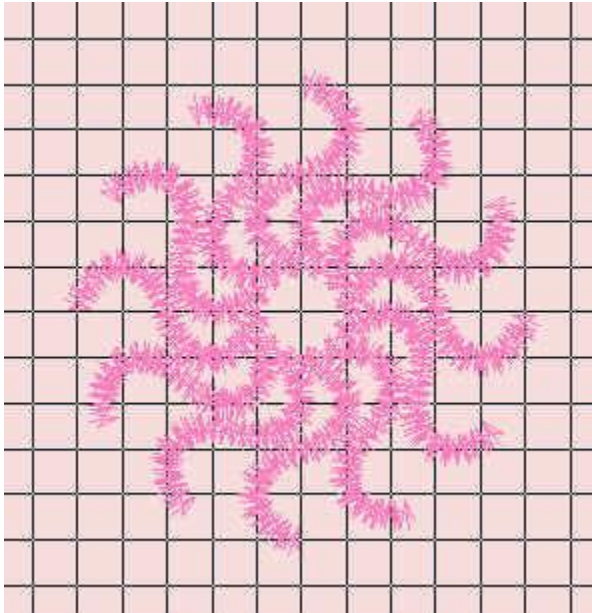


Go to Box Select and drag a square around the design.

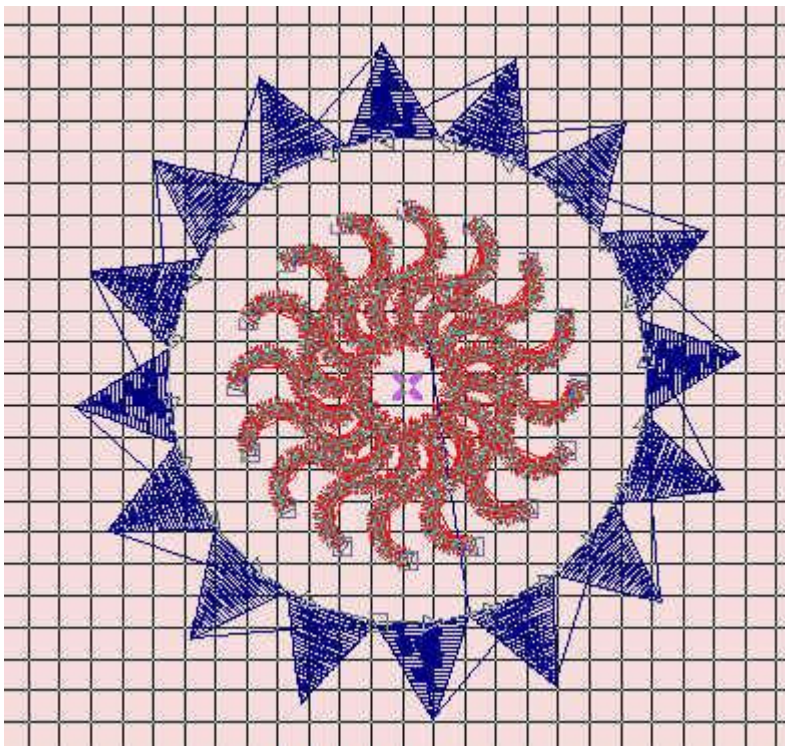


I saved the design in pfaff format so that we didn't alter the buried jump stitch. If we try and rotate and duplicate the wave design without saving it first the jump stitch will need to be changed in each section of the new design.

Place a Mark and rotate and duplicate around it as we did in the previous lessons.



You can add an outer ring by selecting the Zigzag form and using 3 points. Reduce the zigzag down to 3 x 3 grids and rotating the triangle shape so the point is facing upwards. Fill with horizontal fill and save to the clipboard. Open a Regular Polygon form 24 points and enlarge it to fit around the outside of the wave design. Select the form and Fill – Border – Clipboard Even. You will get a Sun effect around the circle.



You will need to bury the jump stitch from the top to bottom of the triangles as we did in the wave form.



Just thought I'd share this with you as well.

I wanted to see if it was possible to make a fur flower in thred without cutting stitchers as we do with fringing.

I made a sample of fur in PE Design 4 saved it as a Pfaff file and then opened it in Thred. For some reason when you box select part of the fur it will break away from the rest of the stitch design.

With the part of the fur I broke away still selected I copied it to the clipboard.

I then deleted the fur from the workspace. Next I opened a Regular Polygon Form with 36 points and enlarged it. Next I went to Fill – Border – Clipboard Even the fur was around the edge of the circle now so I went to Edit – Flip – Order to send it to the inside of the circle.

By doing a Copy and Paste of the circle and reducing the size down I was able to make a layered circular flower.

I also changed the stitch length of the fur to 5.



You will notice that the flower actually curled so I would suggest you use this on a firm fabric. Also hoop the fabric well to try and reduce the pulling. You could also make them on felt so that you could cut around the flower. To make the flower thick I actually used 5 layers of circles, 2 light pink, 2 darker pink and 1 dark colour for the centre as well as a plain filled circle at the centre.

Have fun.

Vanessa